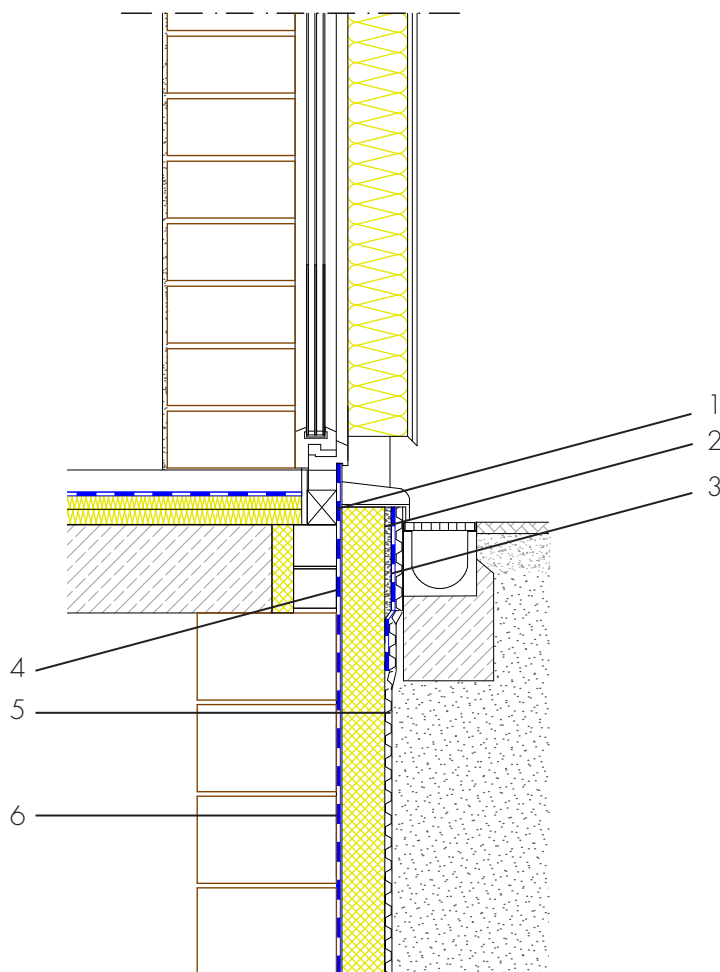


Ground-level element, brick basement with perimeter insulation

Single-facade masonry with composite thermal insulation system



- 1 Connection of ground-level element - ASO-Connector-Joint-Tape - connection of the ground-level element to the building waterproofing with a joint tape with self-adhesive strip
- 2 Building skirt render - ASOCRET-M30 - Protection of the waterproofing from damage and visual design of the building skirt area
- 3 Moisture protection - AQUAFIN-RB400 - Protection of the building skirt render from water penetration from behind
- 4 Waterproofing from spray water at the wall skirting - AQUAFIN-RB400 - Protection of the building envelope from damp and foreign matter
- 5 Protection of the waterproofing - Insulation, protection and drainage boards - Protects the waterproofing from damage
- 6 Building waterproofing in contact with the ground - AQUAFIN-RB400 - Two-layer waterproofing to protect the building envelope from moisture and water