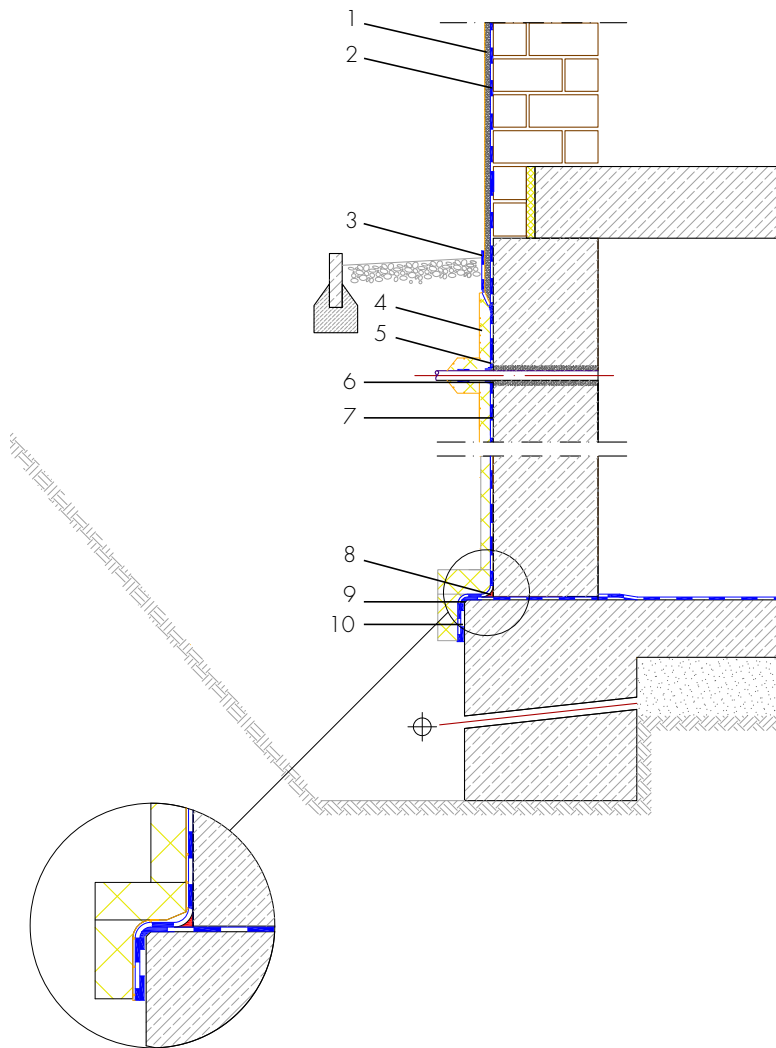


New build basement waterproofing, concrete basement with perimeter insulation

Single-facade masonry, plastered



- 1 Building skirt render - ASOCRET-M30 - Protection of the waterproofing from damage and visual design of the building skirt area
- 2 Waterproofing from spray water at the wall skirting - AQUAFIN-RB400 - Protection of the building envelope from damp and foreign matter
Optional:
 ASO joint tape technology-reinforcement of the waterproofing at the transition from masonry to concrete
- 3 Moisture protection - AQUAFIN-RB400 - Protection of the building skirt render from water penetration from behind
- 4 Protection of the waterproofing - Insulation, protection and drainage boards - Protects the waterproofing from damage
- 5 Waterproofing the intersection - ADF-Pipe-Gasket - Seamless connection of the intersection to the building waterproofing
- 6 Alternative: Rounding of the connection intersection through sealing cove - ASOCRET-M30 - Rounding of the internal corner to guide the waterproofing securely to the intersection
- 7 Building waterproofing in contact with the ground - AQUAFIN-RB400 - Two-layer waterproofing to protect the building envelope from moisture and water
- 8 Sealing cove radius 4-6 cm - ASOCRET-M30 - Sealing cove in the wall/base transition and all internal corners made of water-repellent mortar to accommodate the waterproofing
- 9 External corner, chamfered - Chamfering of all external corners to accommodate the building
- 10 waterproofing
 Waterproofing of the face of the water tight floor slab at least 15 cm from the top edge