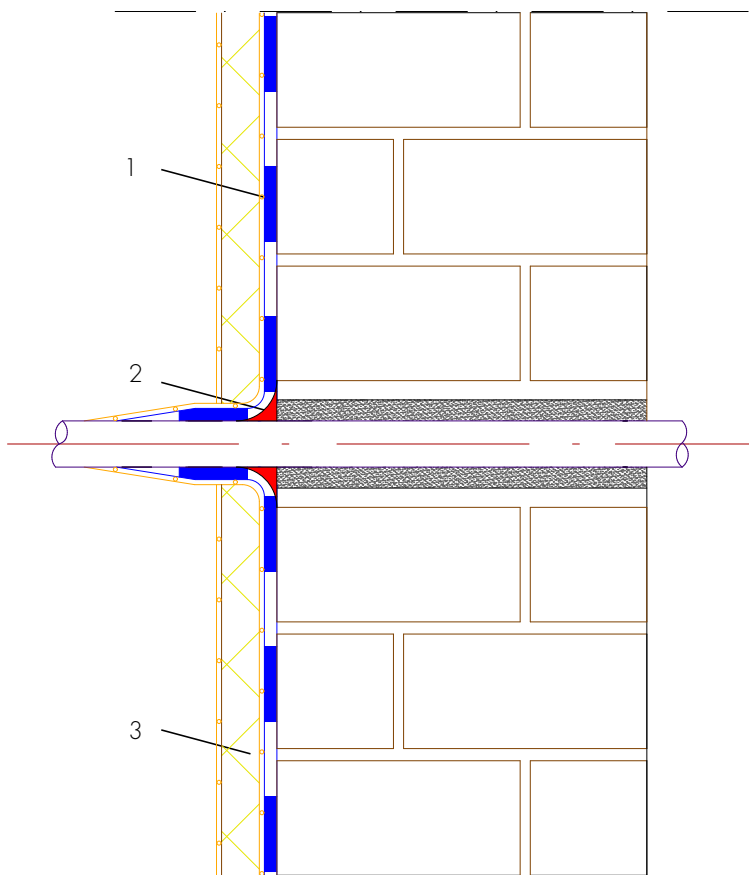


New build intersection wall single-shell construction



- 1 Building waterproofing in contact with the ground - AQUAFIN-RB400
- Two-layer waterproofing to protect the building envelope from moisture and water
- 2 Rounding of the connection intersection through sealing cove - ASOCRET-M30
- Rounding of the internal corner to guide the waterproofing securely to the intersection
- 3 Protection of the waterproofing -
Insulation, protection and drainage boards - Protects the waterproofing from damage