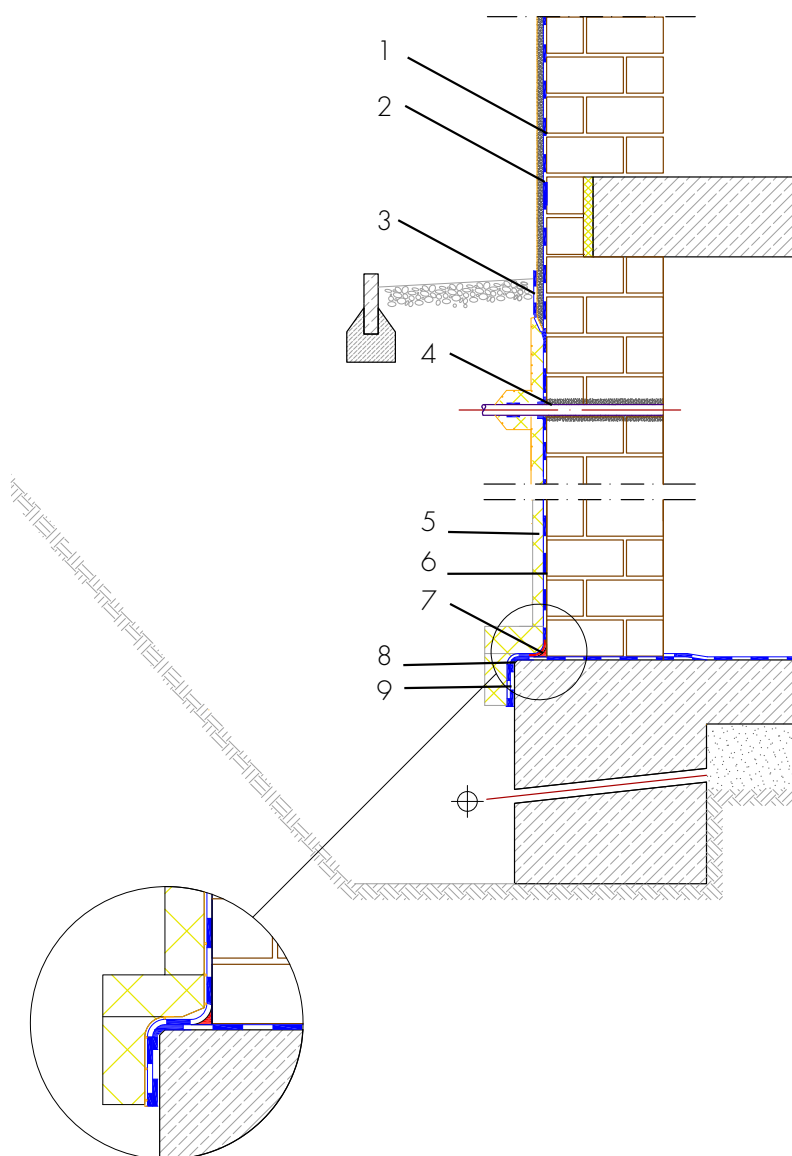


New-build basement waterproofing, brick basement with perimeter insulation

Single-facade masonry plastered



- 1 Building skirt render - ASOCRET-M30 - Protection of the waterproofing from damage and visual design of the building skirt area
- 2 Waterproofing from spray water at the wall skirting - AQUAFIN-RB400 - Protection of the building envelope from damp and foreign matter
- 3 Moisture protection - AQUAFIN-RB400 - Protection of the building skirt render from water penetration from behind
- 4 Waterproofing the intersection - ADF-Pipe-Gasket - Seamless connection of the intersection to the building waterproofing
- 5 Protection of the waterproofing - Insulation, protection and drainage boards - Protects the waterproofing from damage
- 6 Building waterproofing in contact with the ground - AQUAFIN-RB400 - Two-layer waterproofing to protect the building envelope from moisture and water
- 7 Sealing cove radius 4 - 6 cm - ASOCRET-M30 - Sealing cove in the wall/ base transition and all internal corners made of water-repellent mortar to accommodate the waterproofing
- 8 External corner, chamfered - Chamfering of all external corners to accommodate the building waterproofing
- 9 Waterproofing on front side of floor slab - AQUAFIN-RB400 - Waterproofing the front side of the floor slab/foundations to safeguard the transition to the wall material