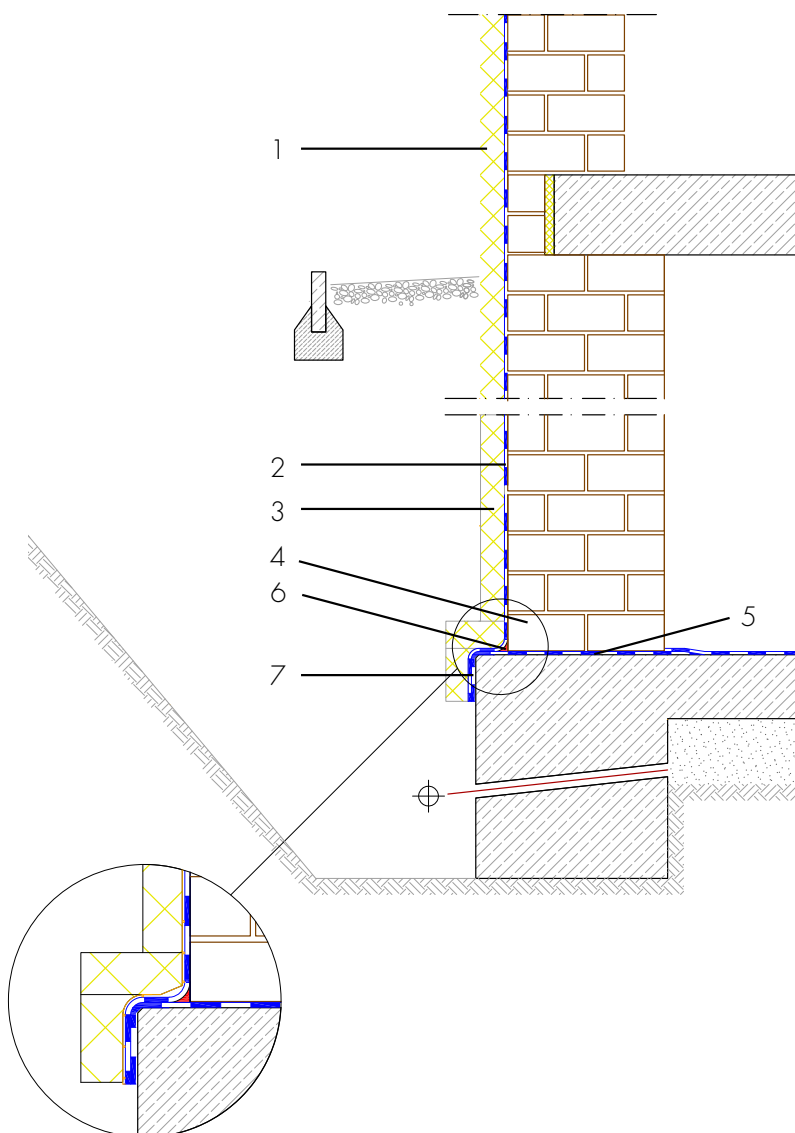


New build basement waterproofing, brick basement with perimeter insulation and composite thermal insulation system

Single-facade masonry with composite thermal insulation system



- 1 Composite thermal insulation system
- 2 Building waterproofing in contact with the ground - AQUAFIN-RB400 - Two-layer waterproofing to protect the building envelope from moisture and water
- 3 Protection of the waterproofing - Insulation, protection and drainage boards - Protects the waterproofing from damage
- 4 Back brickwork/front wall facade
- 5 Horizontal barrier under walls - AQUAFIN-RB400 - Protection from capillary rising water
- 6 Sealing cove radius 4 - 6 cm - ASOCRET-M30 - Sealing cove in the wall/ base transition and all internal corners made of water-repellent mortar to accommodate the waterproofing
- 7 Waterproofing on front side of floor slab - AQUAFIN-RB400 - Waterproofing the front side of the floor slab/foundations to safeguard the transition to the wall material