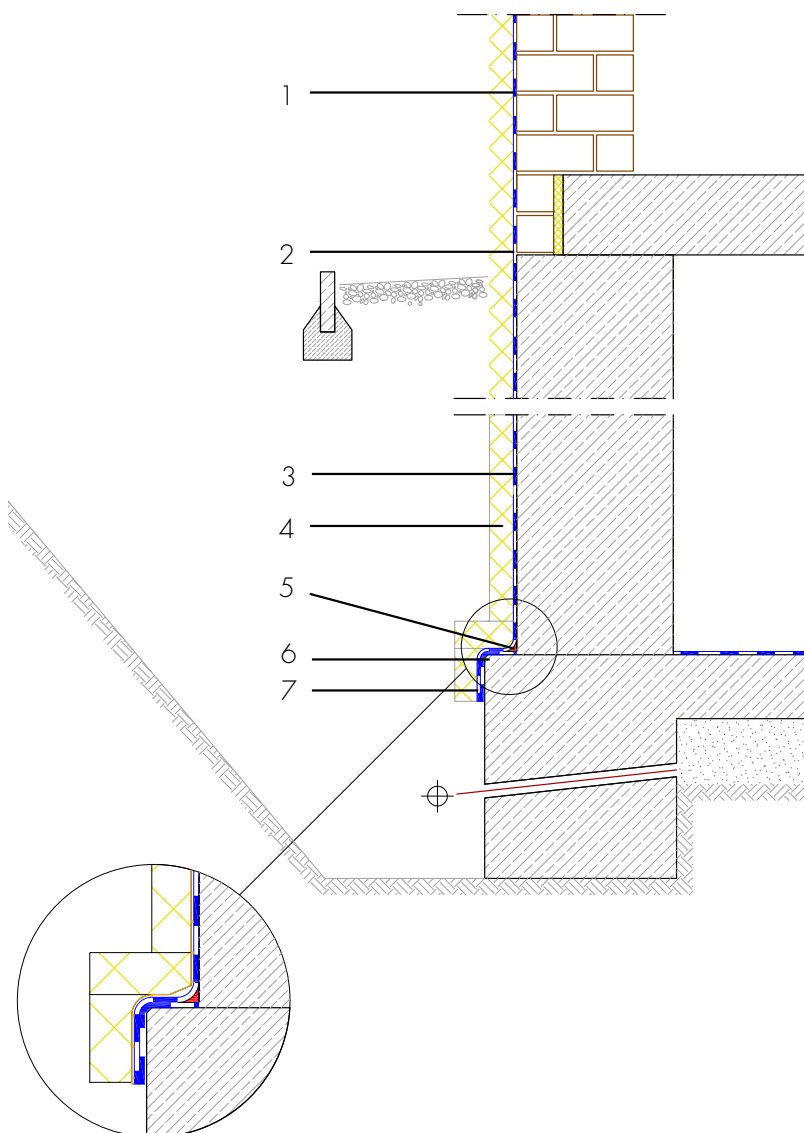


New build basement waterproofing, concrete basement with perimeter insulation and composite thermal insulation system

Single-facade masonry with composite thermal insulation system



- 1 Waterproofing from spray water at the wall skirting - AQUAFIN-RB400 - Protection of the building envelope from damp and foreign matter
- 2 Transition to concrete structure - ASO reinforcing insert - Reinforcement of the waterproofing in the transition area between masonry and concrete
- 3 Building waterproofing in contact with the ground - AQUAFIN-RB400 - Two-layer waterproofing to protect the building envelope from moisture and water
- 4 Protection of the waterproofing - Insulation, protection and drainage boards - Protects the waterproofing from damage
- 5 Sealing cove radius 4 - 6 cm - ASOCRET-M30 - Sealing cove in the wall/base transition and all internal corners made of water-repellent mortar to accommodate the waterproofing
- 6 External corner, chamfered - Chamfering of all external corners to accommodate the building waterproofing
- 7 Waterproofing on front side of floor slab - AQUAFIN-RB400 - Waterproofing the front side of the floor slab/foundations to safeguard the transition to the wall material