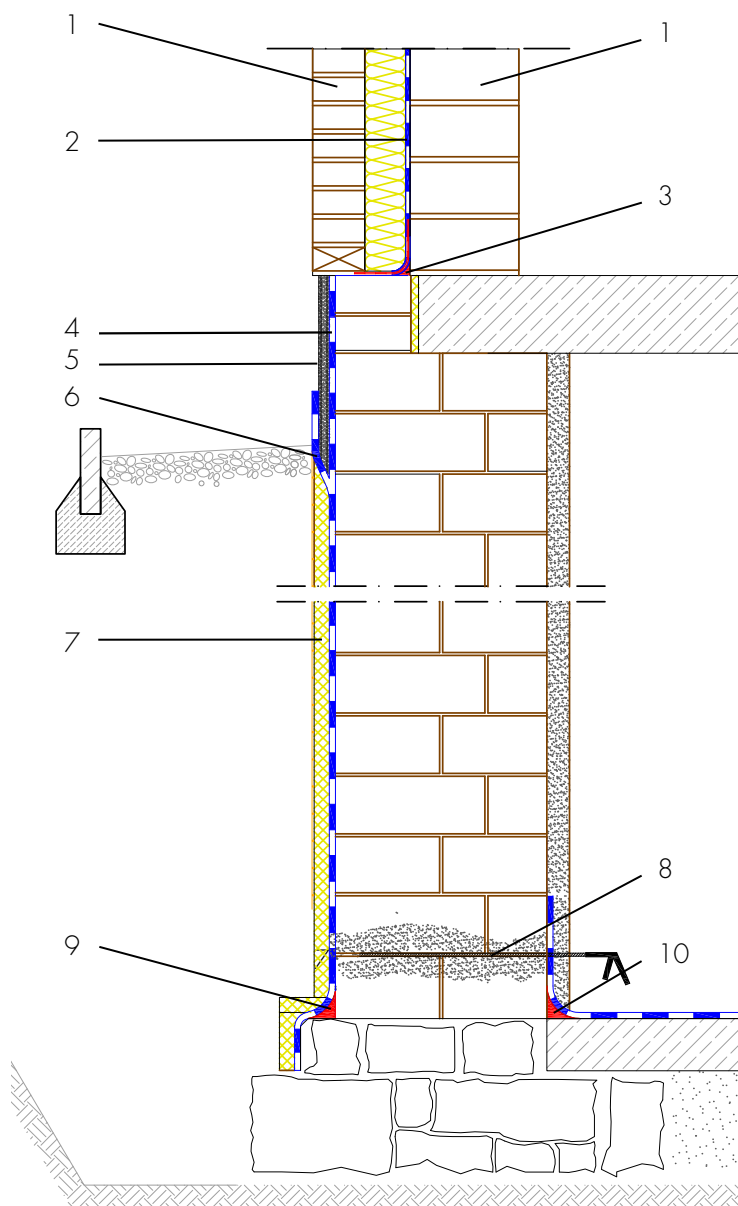


# Restoration basement waterproofing, external waterproofing, internal borehole barrier



- 1 Back brickwork/front wall facade
- 2 Backing masonry waterproofing - AQUAFIN-RB400 - Protection of the building envelope from damp and foreign matter
- 3 Sealing cove radius 4 - 6 cm - ASOCRET-M30 - Sealing cove in the wall/ base transition and all internal corners made of water-repellent mortar to accommodate the waterproofing
- 4 Waterproofing from spray water at the wall skirting - AQUAFIN-RB400 - Protection of the building envelope from damp and foreign matter
- 5 Building skirt render - ASOCRET-M30 - Protection of the waterproofing from damage and visual design of the building skirt area
- 6 Moisture protection - AQUAFIN-RB400 - Protection of the building skirt render from water penetration from behind
- 7 Protection of the waterproofing - Insulation, protection and drainage boards - Protects the waterproofing from damage
- 8 Retrospective horizontal barrier - AQUAFIN-i380 - Installation of a retrospective horizontal barrier to prevent capillary rise of moisture in masonry
- 9 Sealing cove radius 4 - 6 cm - ASOCRET-M30 - Sealing cove in the wall/ base transition and all internal corners made of water-repellent mortar to accommodate the waterproofing
- 10 Locking groove and sealing cove - ASOCRET-M30 - Locking groove and rounding of the internal corner