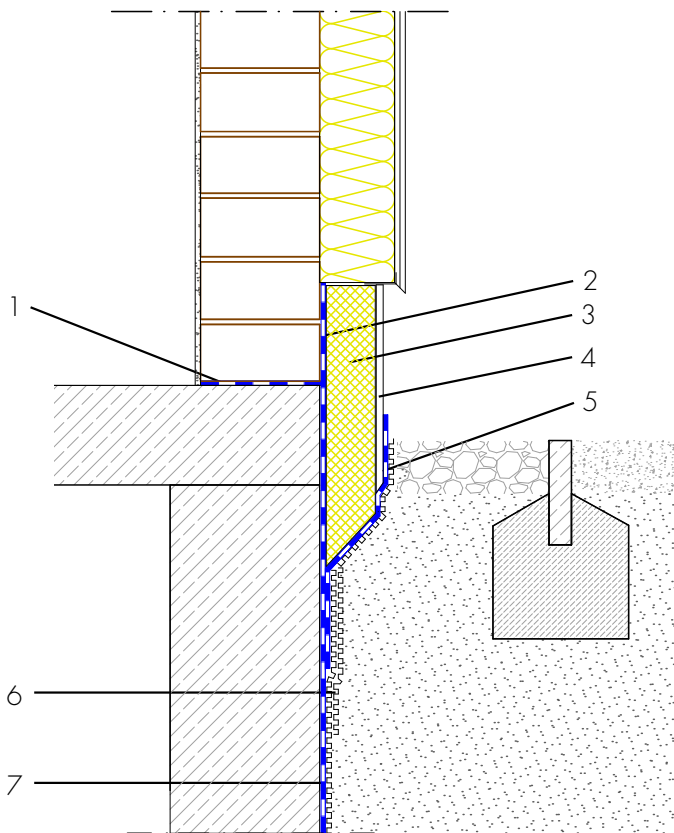


New-build skirting waterproofing, concrete basement with frost apron

Masonry with composite thermal insulation system



- 1 Horizontal barrier under walls - AQUAFIN-RB400 - Protection from capillary rising water
- 2 Waterproofing from spray water at the wall skirting - AQUAFIN-RB400 - Protection of the building envelope from damp and foreign matter
- Optional:
ASO joint tape technology-reinforcement of the waterproofing at the transition from masonry to concrete
- 3 Protection of the waterproofing - Insulation, protection and drainage boards - Protects the waterproofing from damage
- 4 Building skirt render - ASOCRET-M30 - Protection of the waterproofing from damage and visual design of the building skirt area
- 5 Moisture protection - AQUAFIN-RB400 - Protection of the building skirt render from water penetration from behind
- 6 Protection of the waterproofing - Insulation, protection and drainage boards - Protects the waterproofing from damage
- 7 Building waterproofing in contact with the ground - AQUAFIN-RB400 - Two-layer waterproofing to protect the building envelope from moisture and water