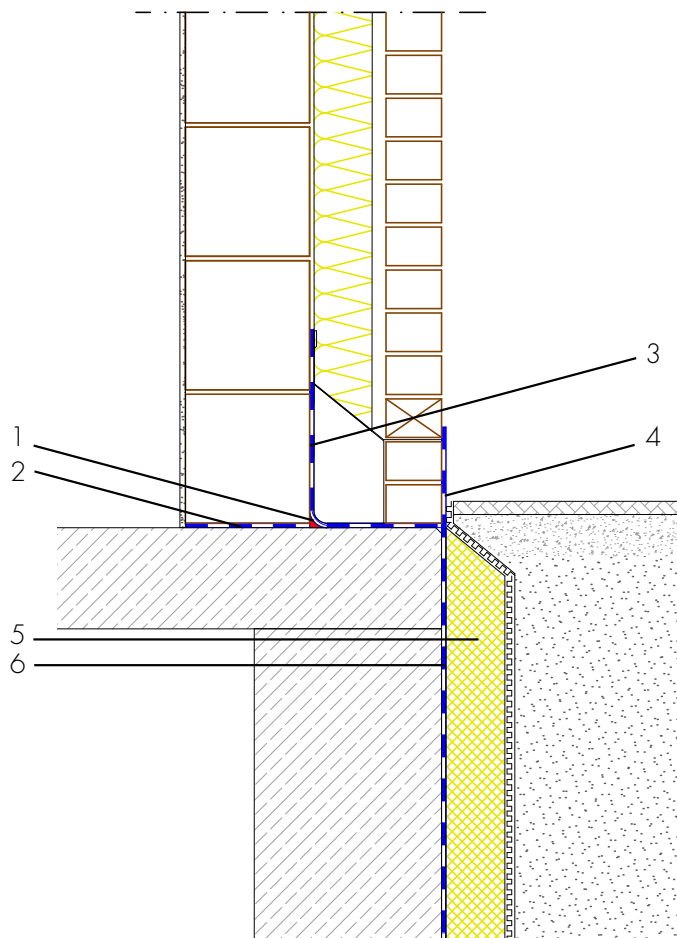


New build skirting waterproofing, double-facade masonry work



- 1 Sealing cove radius 4 - 6 cm - ASOCRET-M30 - Sealing cove in the wall/base transition and all internal corners made of water-repellent mortar to accommodate the waterproofing
- 2 Horizontal barrier under walls - AQUAFIN-RB400 - Protection from capillary rising water
- 3 Backing masonry waterproofing - AQUAFIN-RB400 - Protection of the building envelope from damp and foreign matter
- 4 Waterproofing from spray water at the wall skirting - AQUAFIN-RB400 - Protection of the building envelope from damp and foreign matter
- 5 Protection of the waterproofing - Insulation, protection and drainage boards - Protects the waterproofing from damage
- 6 Building waterproofing in contact with the ground - AQUAFIN-RB400 - Two-layer waterproofing to protect the building envelope from moisture and water